



PARTS LIST

BGEM9000 EASY MOTION FLOOR MACHINE

100 Armstrong Rd., Suite 101 Plymouth, MA 02360
 Phone (800) 242-1378 Fax (877) 672-4566

Revised 2/6/17

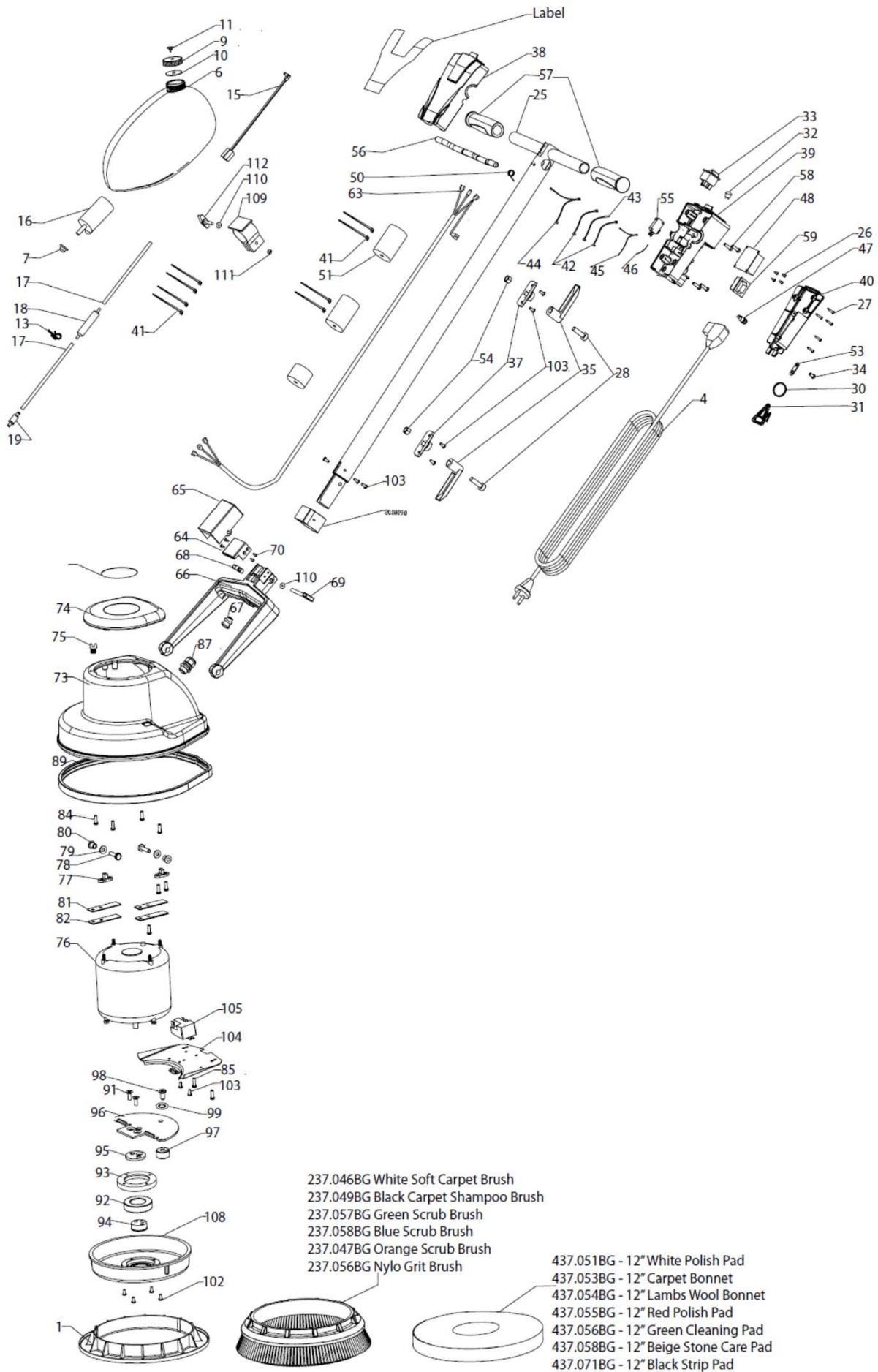
PARTS LIST BGEM9000

| Diagram # | Description | Part Number |
|-----------|---|-----------------|
| 1 | PAD DRIVER | 24.0035.0 |
| 2 | PACKING BOX 1270x380x270MM | 24.0038.0 |
| 3 | PEAR COTTON PLATE HEAD | 24.0038.1 |
| 4 | CORDSET DETACHABLE 3P 11M, 18AWG US | 24.0039.0 |
| 5 | LOGO PRINT + ASSY WATER TANK 1.7L EASY MOTION WHITE BISSELL | L.P.97.0005.2 |
| 6 | WATERTANK 1.7LTR EASY SCRUB WHITE | K.1.P.97.0005.2 |
| 7 | RUBBER RING WATERTANK EASY SCRUB BLACK (960062) | 97.0006.0 |
| 8 | CAP(20003-4),Colour:Yellow + BREATHING VALVE | S.90.2304.8 |
| 9 | CAP (20003-4), Colour: Yellow .8 (P122C) | 90.2304.8 |
| 10 | WHITE WASHER (20003-4-01) | 90.2306.0 |
| 11 | BREATHING VALVE | 97.0043.0 |
| 12 | WATERPUMP COMPLETE W/T HOSE + NOZZLE + CORD EASY MOTION | S.97.0039.717/1 |
| 13 | HOSE CLIP | 24.0042.0 |
| 14 | CABLE BELT 1.8X 100 MM | 92.0031.2 |
| 15 | CORD PUMPMOTOR EASY MOTION 65CM | 97.0038.1 |
| 16 | WATER PUMP 24 VDC EASY SCRUB | 97.0039.0 |
| 17 | WATER HOSE (910025) | 97.0040.0 |
| 18 | DRIPPING POT | 97.0044.0 |
| 19 | ASSY SPRAY NOZZLE | S.97.0079.32 |
| 20 | SPRAY NOZZLE HOUSING, Colour: Grey .32 (Pantone Cool Grey 8C | 97.0079.32 |
| 21 | ONE WAY VALUE CAP, Colour: Black | 97.0080.0 |
| 22 | RUBBER PAD HOLDER | 97.0081.0 |
| 23 | ONE WAY VALUE RUBBER PAD | 97.0082.0 |
| 24 | ONE WAY VALUE SPRING | 97.0083.0 |
| 25 | HANDLE ASSEMBLY CLASSIC BISSELL | S.24.0000.36 |
| 26 | SCREW 3 X 8 | 00.0002.41 |
| 27 | SCREW M3 X 12 SELF TAPING STAINLESS | 00.0002.61 |
| 28 | SCREW M8X27 HEXAGON | 00.0108.1 |
| 29 | SEALED RIVET ALU 4*10MM | 02.0005.0 |
| 30 | METAL RING DIAMETER 30MM | 03.0040.0 |
| 31 | CABLE RESTRAIN PART CABLE SIDE | 03.0041.0 |
| 32 | PUSH SWITCH 2P BLACK | 04.0009.1 |
| 33 | SWITCH 4P LIGHT GREEN 0/I | 04.0009.30 |
| 34 | SCREW 5 X 10 (FIXING RING) | 20.0031.1 |
| 35 | CABLE HOOK EXTERNAL NEW, Colour: Black | 22.0301.0 |
| 36 | HANDLE TUBE COLOR AL NATURE, Kleur: Silver .36 | 24.0000.36 |
| 37 | CABLE HOLDER ADAPTOR | 24.0001.0/A |
| 38 | HANDLE COVER FRONT, Kleur: Black | 24.0002.0 |
| 39 | HANDLE COVER MIDDLE, Kleur: Black | 24.0003.0 |
| 40 | HANDLE COVER REAR, Kleur: Black | 24.0004.0 |
| 41 | CABLE 3 CORD THROUGH TUBE | 24.0005.0 |

| Diagram # | Description | Part Number |
|-----------|--|-----------------|
| 42 | WIRE POWER INLET TO MAIN SWITCH | 24.0006.0 |
| 43 | WIRE GROUND | 24.0006.1 |
| 44 | WIRE MAIN SWITCH TO TRANSFORMA | 24.0006.2 |
| 45 | WIRE TO PUMP SWITCH WITH CONNECTOR | 24.0006.3 |
| 46 | WIRE PUMP SWITCH TO OUT LET | 24.0006.4 |
| 47 | DC CONNECTOR 2.5 | 24.0007.0 |
| 48 | 12V POWER SUPPLIER PCB WITH TRANSFORMA | 24.0008.0 |
| 49 | FIXING HOUSING FOR INLET WIRE CONNECTOR | 24.0009.0 |
| 50 | SPRING_SWITCH LEVER | 24.0043.0 |
| 51 | FOAM INSIDE TUBE(D10xD45x70mm) | 24.0046.0 |
| 52 | TUBE BUSH EASY MOTION 23.6X18 | 24.0048.0 |
| 53 | CABLE GRIP 1.5MM 6/778 ISS4 [65518] | 55.0094.0 |
| 54 | NUT NYLON M8 | 61.0107.2 |
| 55 | POWER SWITCH CONTROL UNIT 16A | 72.0060.1 |
| 56 | HANDLE CONTROL UNIT [MCH 1416-1001-2065], Kleur: Green .688 | 72.0063.688 |
| 57 | RUBBER GRIP CONTROL UNIT [MCH 1416-1001-2061], Kleur: Grey . | 72.0118.357 |
| 58 | SCREW 5 X 16 | 73.0002.3 |
| 59 | RECEPT INLET 3P FOR C6/9/MJP | 75.0002.8 |
| 60 | ALIGNMENT PIN | 85.0050.0 |
| 61 | ASSEMBLY PIVOT | S.24.0010.0 |
| 62 | RIVET AL 2.4X8MM | 02.0005.3 |
| 63 | CABLE 3 CORE 18AWG WITH FEMALE CONNECTOR | 24.0005.1 |
| 64 | FIXING COVER OF OUTLET CONNECTOR | 24.0010.0 |
| 65 | COVER OF ELECTRICAL JOINT SECTION | 24.0011.0/1 |
| 66 | SUPPORT BRACKET HANDLE TO BRUSH UNIT | 24.0012.0 |
| 67 | CABLE INSERT | 24.0013.0 |
| 68 | BUTTERFLY NUT M6 | 24.0014.2 |
| 69 | THUMB SCREW M6x55 NYLOK | 24.0014.3 |
| 70 | SCREW M3X10 COUNTER SUNK | 69.0022.1 |
| 71 | ASSY MOTOR HOUSING [115V] Bumper: Green | S.24.0015.0/688 |
| 72 | WASHER M10 STEEL (DIM10XDIM28XT2.5) | 00.0109.2 |
| 73 | MOTOR HOUSING | 24.0015.0 |
| 74 | ROTO COVER GREEN | 24.0016.688 |
| 75 | HOLDER SPRAY NOZZLE | 24.0017.0/A |
| 76 | MOTOR 250W 115V [Easy Motion] | 24.0018.0 |
| 77 | HOLDER OF SHAFT SUPPORT BRACKET | 24.0019.0 |
| 78 | SHAFT SUPPORT BRACKET | 24.0020.0 |
| 79 | WASHER OF SHAFT SUPPORT BRACKET | 24.0021.0 |
| 80 | AXIS | 24.0022.0 |
| 81 | SHIM PLASTIC | 24.0023.0 |
| 82 | SHIM STEEL | 24.0023.1 |
| 83 | SCREW M5 X 16 | 25.0032.1 |
| 84 | SCREW M5 X 16 NYLOK | 25.0032.3 |
| 85 | SCREW M5 X 12 STAINLESS | 25.0032.31 |
| 86 | M5 2BA SHAKEPROOF WASHER INTERNAL TEETH [71008] | 55.0035.0 |
| 87 | CABLE GLAND [INNER DIAMATER:9MM] | 64.0308.0 |
| 88 | LOCTITE 222 | 72.0108.0 |
| 89 | PVC BUMPER C06/9, Kleur: Green .688 (P341C) | 73.0002.688 |
| 90 | ASSY DRIVER PLATE | S.24.0030.0 |
| 91 | COUNTER SUNK SCREW M6X19 | 24.0025.0 |
| 92 | BEARING 6006RS | 24.0026.0 |
| 93 | HOLDER OF BEARING | 24.0027.0 |
| 94 | CONNECTION PART DRIVER CONSTRUTION | 24.0028.0 |
| 95 | WASHER BEARING | 24.0029.0 |
| 96 | DRIVER PLATE | 24.0030.0 |
| 97 | DRIVER BLOCK | 24.0031.0 |
| 98 | M8 X 16 SOCKET BUTTON HEAD SCREW GR 10.9 [71552] | 55.0027.0 |

| Diagram # | Description | Part Number |
|-----------|--|-------------------|
| 99 | M8 EXTERNAL FAN WASHER [71010] | 55.0028.0 |
| 100 | LOCKTITE 222 | 72.0108.0 |
| 101 | ASSY RELAY HOLDER PLATE [115V] | S.24.0032.0 |
| 102 | SCREW M4 X 10 CROSSHEAD MACHINE BL-NI | 00.0121.1 |
| 103 | SEALED RIVET ALU 4*10MM | 02.0005.0 |
| 104 | RELAY HOLDER PLATE | 24.0032.0 |
| 105 | RELAY 705, EASY MOTION, 115V | 24.0033.0 |
| 106 | ASSY DRIVE DISK | S.24.0034.0 |
| 107 | SCREW M4 X 10 CROSSHEAD MACHINE BL-NI | 00.0121.1 |
| 108 | DRIVE DISK | 24.0034.0 |
| 109 | COMPLETE TANK HOLDER EASY SCRUB GREEN EM3 | S.97.0002.688/EM3 |
| 110 | WASHER 12X6X0.8MM STAINLESS STEEL | 00.0106.2 |
| 111 | NUT M5 STAINLESS STEEL | 00.0195.0 |
| 112 | THUMB SCREW M5X38 | 04.0103.2 |
| 113 | HOLDER WATERTANK EASY SCRUB (910100), Kleur: Green .688 | 97.0002.688 |
| 114 | NYLON CAP NUT M5 BLACK | 97.2018.1 |
| | 12" CARPET BRUSH SOFT (WHITE) .008" Bristle Diameter, Natural Polypropylene | 237.046BG |
| | 12" CARPET SHAMPOO BRUSH (BLACK) .012" Bristle Diameter, Crimped 6.6 Nylon | 237.049BG |
| | 12" SCRUB BRUSH (GREEN) .015" Bristle Diameter Crimped Polypropylene | 237.057BG |
| | 12" SCRUB BRUSH (BLUE) .020" Bristle Diameter Crimped Polypropylene | 237.058BG |
| | 12" SCRUB BRUSH (ORANGE) .028" Bristle Diameter Crimped Polypropylene | 237.047BG |
| | 12" NYLO GRIT - ROUGH SURFACES .040" Bristle Diameter X 80 Crimped Grit Silicon Carb | 237.056BG |
| | 12" Polish Pad, (White) | 437.051BG |
| | 12" Carpet Bonnet | 437.053BG |
| | 12" Lambs Wool Bonnet | 437.054BG |
| | 12" Polish Pad, (Red) | 437.055BG |
| | 12" Cleaning Pad, (Green) | 437.056BG |
| | 12" Beige Stone Care | 437.058BG |
| | 12" Strip Pad, (Black) | 437.071BG |

| Diagram # | Description | Part Number |
|-----------|-------------|-------------|
|-----------|-------------|-------------|



- 237.046BG White Soft Carpet Brush
- 237.049BG Black Carpet Shampoo Brush
- 237.057BG Green Scrub Brush
- 237.058BG Blue Scrub Brush
- 237.047BG Orange Scrub Brush
- 237.056BG Nylo Grit Brush

- 437.051BG - 12" White Polish Pad
- 437.053BG - 12" Carpet Bonnet
- 437.054BG - 12" Lambs Wool Bonnet
- 437.055BG - 12" Red Polish Pad
- 437.056BG - 12" Green Cleaning Pad
- 437.058BG - 12" Beige Stone Care Pad
- 437.071BG - 12" Black Strip Pad